

Wall Mount Sensor Installation Guide

July. 2019

1) Select the right position. It is important to install the sensor to the right position by the first time. You do not want drill too many holes on the cabinet. The sensor position should be on the top section of the cabinet because the temperature at bottom of the cabinet is not very uniform. The position should not cause the sensor to interfere with cooking rack and food moving in and out.

Based on these considerations, we recommend the height of the probe should be 3/8" below the top rack on the backwall. For the horizontal position, if you have an Auber [CIRFAN](#) circulation fan kit installed, wall-mount probe should be installed on the right side of the back wall to stay away for the air stream: 5" from the right edge if measured from outside, or 4" from the right wall if measured from the inside. If you do not have the circulation fan installed, place it at the center of the backwall.

Note, if you are not going to use the top rack, the sensor position needs to be selected following same considerations. It can be mounted under the second rack or close to the top, leaving enough room for large size food.

2) Mark the drilling position. The drill position should be marked from inside of the cabinet by using the top cooking rack as the reference. Mark the drilling position about 3/8" below the bottom of the top cooking rack.

3) Drill a 5/16" diameter hole from inside out. The newer model of Bradley has a stainless steel inner wall that is difficult to drill. You can drill a small hole first. Then, enlarge it with 5/16" drill.

4) Remove the burrs on the outside of the cabinet.

5) Feed the sensor into the hole from outside and tight up the nut from inside.

6) Adjust the position of the sensor. Due to the tolerance on the straightness of the sensor and drilled hole, the sensor might be tilted to interfere with the cooking tray. If the sensor obstructs the cooking rack when it slides in and out, lose the sensor nut, rotate the sensor by 90 degree and tighten the nut again.

The installation is completed.



Fig 1, inside view. Red arrow points to the sensor. It should be installed close to the top cooking rack but not touch it. It could interfere with the food on the second rack if it is lower than that position.



Fig. 2, Close up view

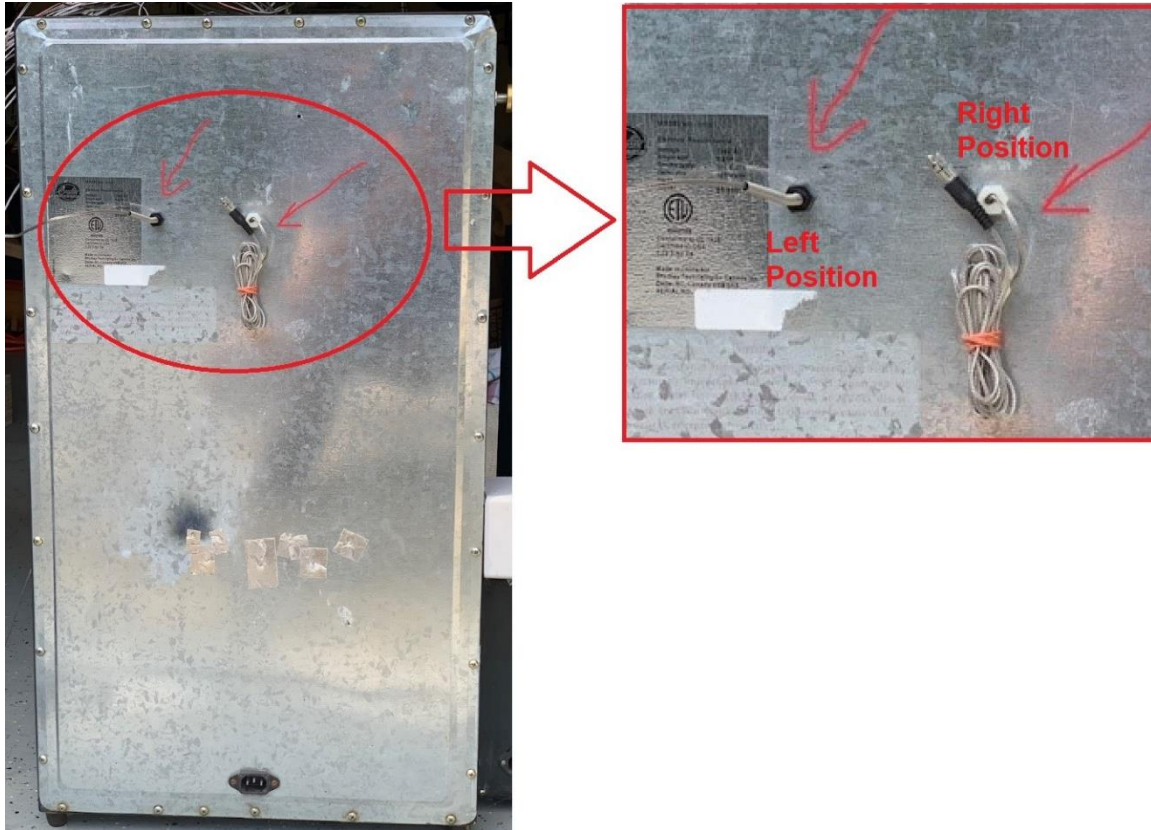


Fig. 3, Back view.

Left probe position: when CIRFAN circulation fan is installed.
Right probe position: normal position.

For Smokin-It customer, please watch the video on YouTube as instruction:

https://www.youtube.com/watch?v=VA_O591nGnU

(The video was offered by Ed Pitts from SmokinTalk.com)

(END)

Auber Instruments

5755 North Point Parkway, Suite 99

Alpharetta, GA 30022, USA

www.auberins.com

E-mail: info@auberins.com Tel: 770-569-8420

Copyright 2007-2019, Auber Instruments All Rights Reserved.

No part of this manual shall be copied, reproduced, or transmitted in any way without the prior, written consent of Auber Instruments. Auber Instruments retains the exclusive rights to all information included in this document.